

Putman Elementary

Blizzard Bags

Second Grade

Day 1

Due Friday, April 11, 2014

Check when completed	Assignment	Parent initials
	Reading: Read <u>Stick Bugs</u> and answer 3 questions.	
	Reading: Read <u>Prairie Dogs</u> and answer the 11 questions.	
	Math: Math Pun Addition Worksheets	
	Science: Read <u>Hey, Shelly!</u> Circle the mammals.	
	Writing: After reading <u>Hey, Shelly!</u> complete the Circle (Venn) Diagram to compare Snail and Turtle.	

The State of Ohio allows us to utilize "at home" work for students in case of a snow day beyond our 5 calamity days. Attached you will find the work we would like for your child to complete while at home. You must send the completed projects to school in two weeks in order to get credit. If the work is not returned, ~~your~~ your child will be counted absent for the day.

Student name: _____

Parent Signature: _____

Date: _____

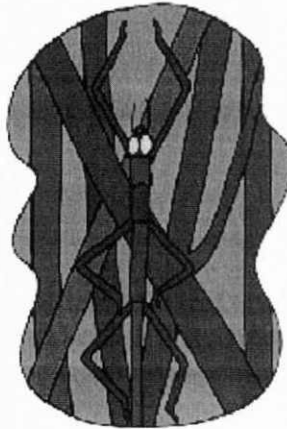
Putman Elementary School

Second Grade Reading

Snow Day 1

Please do this work on the next snow day.

Stick Bugs



(1) Walking sticks, or stick bugs, are slow-moving insects that look like sticks. They are usually brown or green, but they can also be red or gray. Some walking sticks even have wings!

(2) Most walking sticks are between two and four inches long and look very slender. They are so skinny that they look like real sticks. This helps them blend in with trees and not stand out so that they can stay safe.

(3) To protect themselves, walking sticks stay still for a long time. By doing this, they can keep themselves safe from animals who want to eat them. Sometimes, walking sticks move back and forth in the wind. Moving like this makes them look like real sticks even more!

1. Using clues from the passage, what does the word protect most likely mean?

- A. to move in the wind
 - B. to keep safe
 - C. to be patient
 - D. to look like a stick
-

2. Based on the passage, what does the word blend most likely mean?

Reading Day 1

- A. to have wings
 - B. to not look silly
 - C. to stay still
 - D. to not stand out
-

3. Using clues from the passage, what does the word slender most likely mean?

- A. slow
 - B. gray
 - C. real
 - D. skinny
-

Prairie Dogs



- (1) Prairie dogs are animals from the rat family. They are not dogs at all! They look most like large squirrels. They have light brown fur and black or white tails. They weigh almost four pounds and are only about 1½ feet tall!
- (2) To keep safe, prairie dogs burrow down into the ground. They make their homes in dirt tunnels to stay away from bigger animals.
- (3) A prairie dog family shares one tunnel and chases off other prairie dogs. Family members greet each other with a kiss. This is a lot like how people say hello to their families.

4. Based on the passage, what does the word greet most likely mean?

- A. to be safe
- B. to say hello
- C. to say sorry
- D. to be playful

Reading Day 1

5. Based on clues in the passage, burrow is another word for

- A. rest.
 - B. dig.
 - C. jump.
 - D. spend.
-

6. Damian is a naughty boy. Last week, his teacher caught him taking Erin's milk money. Yesterday, the bus driver yelled at Damian for pulling Mary's hair.

Damian is naughty, so this means that he is

- A. sick.
 - B. bad.
 - C. large.
 - D. jolly.
-

7. Whitney was really thrilled. She loved playing softball. Now, her team was in the championship game! She was so excited to play in the big game. She got to the park early to practice catching and throwing with her best friend.

When a person is thrilled, that means he or she is

- A. angry.
 - B. tired.
 - C. upset.
 - D. excited.
-

8. The children were horrified after listening to ghost stories. They did not want to sleep alone. They ran upstairs and got in bed with their parents.

What does horrified mean in the passage above?

- A. excited
- B. happy
- C. hungry

Reading Day 1

D. scared

9. The day was drizzly. The soccer players got wet and muddy. The ground was very slippery.

The word drizzly means to be

- A. hot.
 - B. rainy.
 - C. dry.
 - D. sunny.
-

10. Jeanette was weary. She stayed up all night doing her homework. Jeanette knew she would fall asleep in class because she was so tired.

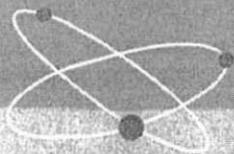
What does the word weary mean?

- A. awake
 - B. tired
 - C. angry
 - D. excited
-

11. Lawson jumped over his lazy dog and walked to the kitchen. Lawson was starving. He thought about eating an apple. Dinner was still hours away. He was really hungry, so a snack would help.

What does the word starving mean?

- A. hungry
 - B. angry
 - C. thirsty
 - D. full
-



Add the numbers using regrouping.

$$\begin{array}{r} 1 \\ 38 \\ + 8 \\ \hline \end{array}$$

46

A

$$\begin{array}{r} 15 \\ + 38 \\ \hline \end{array}$$

S

$$\begin{array}{r} 54 \\ + 18 \\ \hline \end{array}$$

T

$$\begin{array}{r} 31 \\ + 19 \\ \hline \end{array}$$

I

$$\begin{array}{r} 26 \\ + 9 \\ \hline \end{array}$$

B

$$\begin{array}{r} 25 \\ + 16 \\ \hline \end{array}$$

N

$$\begin{array}{r} 58 \\ + 26 \\ \hline \end{array}$$

K

Addition and
Subtraction

Brain Box

Example:

$$\begin{array}{r} 28 \\ + 36 \\ \hline \end{array}$$

Sometimes you need to **regroup** numbers when you add.

When you add up the numbers in the ones column, the sum is 14, which is one group of 10 and 4 ones.

Step 1. Write the 4 in the ones

column and carry the 1 over to

Step 2. Then add up all the

numbers, including the

Math Day 1

$$\begin{array}{r} 23 \\ + 69 \\ \hline \\ \hline \end{array}$$

L

$$\begin{array}{r} 68 \\ + 19 \\ \hline \\ \hline \end{array}$$

O

$$\begin{array}{r} 77 \\ + 17 \\ \hline \\ \hline \end{array}$$

R

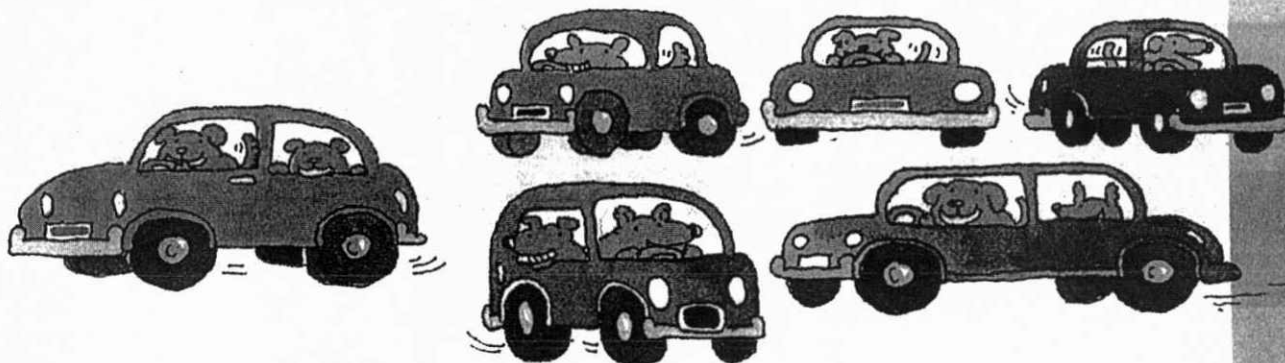
$$\begin{array}{r} 38 \\ + 29 \\ \hline \\ \hline \end{array}$$

G

Use your answers to decode the riddle.

Riddle:

Where do dogs park their cars?



Addition and Subtraction

Addition with regrouping

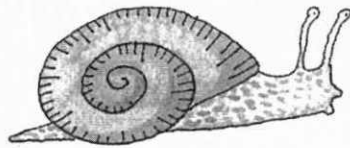
Answer:

50 41 35 46 94 84 50 41 67

Hey, Shelly!

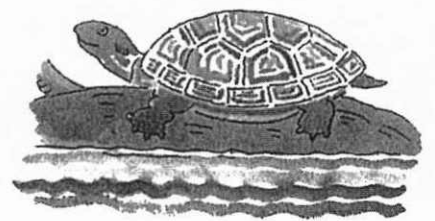
Read about the snail and the turtle.

Snail



The snail is not a mammal or a reptile. It is a mollusk. The snail's body is soft, but it's protected by a hard shell. How does the snail move? Very slowly! That's because it has just one foot. This soft, flat foot makes a slimy liquid that helps it crawl. A snail has two pairs of tentacles. It sees with eyespots on its long tentacles. The short tentacles help the snail smell and touch.

Painted Turtle



The painted turtle lives in a large group. It lives in slow-moving rivers with soft, muddy bottoms. The turtle is a reptile with a shell. Its hard shell is called a carapace.

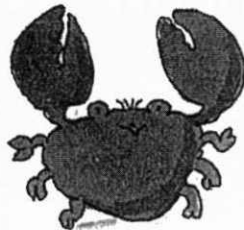
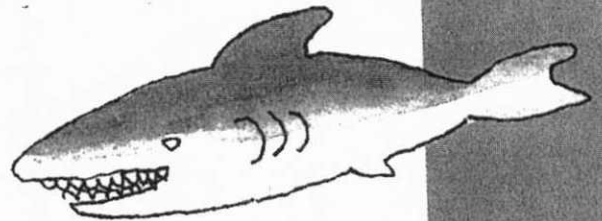
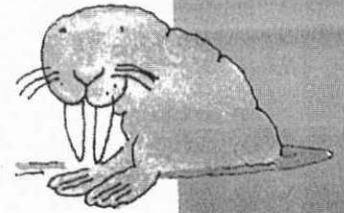
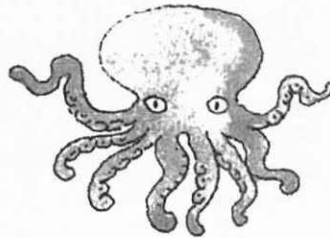
When it's cold outside, the turtle hibernates under the mud. A turtle is slow on land, but its webbed feet help it swim. When danger is near, the turtle pulls its head, legs, and tail inside the shell to protect itself.

Most mammals live on land, but some mammals live in the sea.

Sea mammals have lungs. They swim up to the surface to breathe air.

Sea creatures that are not mammals do not need to breathe air.

Circle the sea creatures that are mammals.



Write a fact about how snails and turtles are the same in the green space.

Write a fact about how snails are different in the blue space.

Write a fact about how turtles are different in the yellow space.

